

# LUTCHER THEATER FOR THE PERFORMING ARTS

## Technical Information      Orange, TEXAS



updated 04/2019

**Mailing Address:**  
Lutcher Theater  
P.O. Box 2310  
Orange, Texas 77631-2310  
www.lutcher.org

**Street Address**  
707 West Main Street  
Orange, Texas 77630

### STAFF

Managing Director, Lynae Sanford . . . . . lynae@lutcher.org  
 Technical Director, David Boehme . . . . . david@lutcher.org  
 Operations Director, Cris McLeod. . . . . cris@lutcher.org  
 House Manager/Merch . . . . . wendy@lutcher.org  
 Box Office Manager . . . . . wendy@lutcher.org  
 Marketing Manager . . . . . marla@lutcher.org  
 Administrative . . . . . kathleen@lutcher.org

### PHONE:

Office & Box Office. . . . . (409) 886-5535  
 Technical Director. . . . . (409) 886-5534  
 Backstage line/fax-phone . . . . . (409) 886-2934  
 Backstage line . . . . . (409) 886-8215  
 FAX . . . . . (409) 886-5537  
 David Boehme cell . . . . . (409) 920-5573  
 Lynae Sanford cell . . . . . (409) 988-9221  
 Cris McLeod cell. . . . . (409)781-2909  
 Wifi available throughout backstage, green room, and board room.

### GENERAL INFORMATION

The Lutcher Theater, built in 1980 is a 1,442 seat proscenium hall with 848 seats on the main level and 576 seats in the balcony. The theater is privately owned by the Nelda C. & H.J. Lutcher Stark Foundation. Operation of the Theater is by Lutcher Theater Inc.  
 \*\*Lutcher Theater is a Tobacco Free Property\*\*  
 Smoking in designated area only.

### DIRECTIONS

From Interstate Highway 10, take Hwy 90 (Simmons) Go South (3 miles) to Green Ave. Turn left on Green go to 8th St. Turn left and go two blocks and turn right on Front St., go one block turn left into loading dock.  
 \*The theater is a six-story building, the tallest in the downtown area.

## STAGE

Dimensions at proscenium opening:  
 Width - 45' 0"    Height -30' 0"  
 Depth -35' 10" to rear wall  
 -The orchestra pit (hydraulic lift) is flanked on each side w/stairs leading into house. (Any pit height possible by manual operation). There is stair access to the pit both SL and SR.  
 -The stage floor is *Stagelam* floor decking (black matte)  
 The main part of the stage floor is built over trap doors offering some resiliency making it more suitable for dancing. A "Marley" type dance floor is available to cover a 44' x 30' area in black or grey.

Lagging into stage floor is permitted when holes are **predrilled** with a maximum depth of 1.5".

Act curtain line to downstage lip of the orch. pit is 13'.  
 Orchestra pit, is 9' at its widest point.  
 (If pit is up, 13' to downstage edge from PL  
 (If pit is down, 4' to downstage edge from PL.)  
 Distance from proscenium edge to fly system(SR) is 19'.  
 Distance from proscenium edge to stage left wall is 21'.  
 Distance from proscenium edge to top of balcony 117'.  
 The wing space on stage has a minimum clearance of 16' and is clear & accessible to stage, storage and dressing rooms.

### FLIES

Stage to grid is 77'. Stage to Pipe is 67'.  
 Total 42 single purchase linesets (see plot page 4 for hanging schedule).  
 Battens are 2" O.D. (outside diameter), and are 60' in length.  
 Lines fly within 5' of stage floor. Distance between lines 8".  
 Lines may be extended for very light loads. Lock rail is located SR at stage level. Maximum weight per line varies (see hang plot). Total weight inhouse 16,000lbs. Orchestra shell can only be hung on specific lines. The shell is not hung unless requested.

### DRAPES

Act curtain, 1st Border (*Grand Teaser*) are Bronze color.  
 Act curtain may travel or guillotine.  
 They are manually controlled SR.

Traveler will open 46' 0". (*Lineset 16*)  
 Five (5) Borders (black) no fullness,  
 Borders are 61' wide x 12' high.  
 Six (6) sets of Legs (black) no fullness,  
 20' wide x 35' high.  
 One (1) 30' x 60' white scrim.  
 One (1) 30' x 60' black scrim.  
 One white cyc 34 x 50

**DRESSING ROOMS**

1st Floor — SR Star 1 seats (3)  
 Star 2 seats (3) Handicap accessible  
 Chorus 1 seats (15)  
 Chorus 2 seats (12)

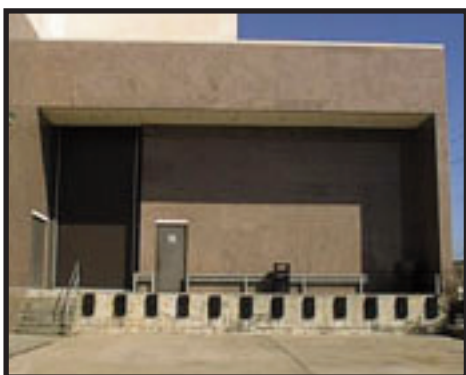
2nd Floor /SL . . . . . Chorus 3 seats (8)  
 3rd Floor /SL . . . . . Chorus 4 seats (8)

Access to 2nd and 3rd floor rooms by (non-public) stairs SL or by elevator in public corridor.  
 Green room is located off stage right.  
 Dressing rooms have hot & cold water, showers, toilets, lavatory, lighted makeup mirrors, chairs & wardrobe racks.  
 Wardrobe room is equipped with a 9' x 3' table, (8) rolling racks, (2) steamers, (3) irons, (2) ironing board, (3) washing machines (3) dryers, (1) large stainless sink.

**LOADING DOCK**

Loading dock entrance is on the corner of Front St. & 7th St.  
 \*Stacking Motor available in Shop Area.\* (48/12fpm)  
 The dock is 3' 10" high and 6'6" wide x 40' long.  
 The loading door is 9' 6" wide and 16' 0" high.  
 The loading dock is off-stage left and there is direct access from it to the stage. (3) trucks will fit into loading dock at one time with the longest to park closest to the steps.  
 Spotters are required for all vehicles backing into loading dock.  
 NEW in 2015, 18 wheeler lane is open across the street from loading dock for easier dock parking.

view of loading dock



**LIGHTING**

**LIGHT BOOTH:** Located at the rear of the main level in center.  
 ETC Ion & Expression 3 Lighting consoles.

**LIGHTING INVENTORY**

- 12. . . . . MAC-500 . . . . . Martin
- 8 . . . . . MAC-600 . . . . . Martin
- 8. . . . . Mac-101 . . . . . Martin
- 24. . . . . Bulldog Pro LED Par . . . . . K9

- 46. . . . . 26 Deg . . . . . 575 W . . . . . (S4)
- 50 . . . . . 36 Deg . . . . . 575 W . . . . . (S4)
- 10. . . . . 50 Deg . . . . . 575 W . . . . . (S4)
- 8. . . . . 19 Deg . . . . . 575 W . . . . . (S4)
- 35 . . . . . 8" FRESNELS . . . . . 1K W . . . . . (Strand)
- 54. . . . . PAR 64 . . . . . 1K . . . . . MFL/WFL/NFL (Strand)

**FRONT OF HOUSE LIGHTING**

- 20. . . . . 10 Deg . . . . . 750W . . . . . (S4)
- 14. . . . . 14 Deg . . . . . 750W . . . . . (S4)

**UNDER BALCONY TRUSS:**

Given the absence of a balcony rail, an under-balcony truss is available. Hoisted into position by a pair of 1/2 ton house motors, the 12" box trussing can be configured in 20' & 30' lengths. A dry-run of DMX & Socapex cabling can be in place with advance notice. From this position, intelligent lighting & projection has a dead-on angle to the proscenium opening at a distance of 71'.

**BOX BOOM INSTRUMENTS**

- 8. . . . . 19 Deg . . . . . 575 W . . . . . (S4) HR
- 8. . . . . 19 Deg . . . . . 575 W . . . . . (S4) HL

All instruments are equipped with C-clamp, gel frame, and 2P&G (stagepin) connectors. Pattern holders & replacement lamps are available on site. Prehangs are possible with proper advance materials.

**FOLLOWSPOTS**

- 4. . . . . Lycian 1275, Six Color Bomerang
- CYC LIGHTS/BOOMS AND CABLE and other stuff.**

- 8. . . . . Cyc Lights 3 Gang , 12 x 14 frames, FFT 1000 W (Strand)
- 8. . . . . 50 lb Base Boom Stands w/ 16' pipes
- 6. . . . . 8ft - Towers with (4) 36 Degree in each tower
- 10 . . . . . Wybron Color Changers

**LIFT/LADDER**

- (1) 36' Genie Scissor Lift & (1) 24' Genie AWP Lift.

**SERVICES**

- (2) three phase, 208 Y, 4 wire, 400amp disconnects are located approx 6 & 10 ft. offstage left on the proscenium wall. (w/ Cams)
- (1) three phase, 208 Y, 4 wire, 200amp disconnect is located approx 18 ft. offstage left in the dimmer room
- (1) three phase, 208 Y, 4 wire, 100amp disconnect is located approx 17 ft. offstage left on proscenium wall for sound applications if necessary. (w/ Cams)
- (*This service via dedicated, isolated, shielded transformer*)
- (1) three phase 208 Y, 4 wire, 60 amp disconnect is located near loading dock for shore power.

**DIMMERS**

Teatronics MD 288 170 2.4K dimmers  
 (System is dimmer per circuit. All circuits accessed via DMX 512)  
 ETC "Sensor" portable touring dimmer rack SR48

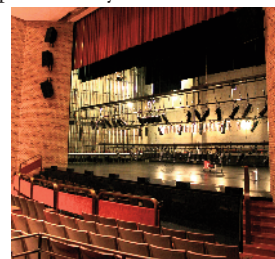
**SOUND**

**SOUND BOOTH**

Sound Booth is 8' x 12' open area separated by a half wall located rear orchestra house left and 80' 7" from stage. (2) 32 channel digital snakes may be patched off-stage left and/or right via fiber optics. Also a permanent copper house snake is located offstage.

**MIXERS**

- 2 (1) APB DynaSonicS C56+4 VCA



## Analog Sound Console

(1) Allen & Heath QU-24 Digital Sound Console

### HOUSE CLUSTER

House sound reinforcement is an EAW point-source system, with left, right, and center clusters of AX series cabinets. (11 fullrange & 8 subs) Front-fill, and over/under-balcony delay cabinets are in place to obtain good coverage throughout the hall. QSC amplification and processing is via BSS London Soundweb. All portions of the system, including lobby & backstage, may be patched independently.

Auxiliary Groundstacked Mains & Double 18" Subs Available(\*)

### SPEAKERS

The house left/right clusters are mounted near top of the proscenium wall house left and right. Chain motors are available near same location for company mains to be flown.

(1,300lbs per side)

### MICROPHONES (8channels of Shure UHF-R Wireless)

5	Shure Beta87c (wireless UHF-R UR2, SM58 caps available)		
5	Countryman E6i (wireless UHF-R UR1 packs)		
7	Shure SM 57	6	Shure SM 81
4	Shure SM 58	2	Shure Beta 87c
3	Shure Beta 87a	4	Shure Beta 58a
2	AKG 414	3	AKG 451
4	AKG 480 (w/ CK61 capsules)		
1	Heil PR-40		
4	Sennheiser MD 421		
3	Sennheiser e835		
5	Crown PCC		
1	EV RE-20		

### AUXILIARY EQUIPMENT

1	Yamaha SPX2000
1	T.C.Electronic M2000
2	Denon DN-C630 CD Player
1	Dbx 160x Compressor (older model, single channel)
3	KlarkTeknik DN504 Compressor (12 ch. total)
2	KlarkTeknik DN514 Gate (8 ch. total)
1	Alesis DEQ830 8ch EQ
2	BagEnd TA5000c w/Single 18" Subs
6	EAW KF650e
4	EAW SB528 Auxiliary Subs(*)

### MONITORS

14 EAW SM 200 LowProfile Monitors

4 JBL MK 905 Floor Monitors

Bi-Crown amplification for Monitors/8 channels.

\*Contact Theater for Full Monitor Details\*

### VIDEO

(1) Panasonic DW730 8k Projector

DaLite DualVision Screen (13' x 22'4")

2/3 inch CCD Color monitor camera for stage monitoring in lobby area and backstage. System is closed circuit.

**PIANOS** 1 SD-10 Baldwin Grand, 1 Yamaha upright

### INTERCOM

Clear Com System, 2 channel main station power/10 single channel belt packs/Single & Double muff headsets/1 Handset. Telex Radio Com-Wireless/4 single channel packs)

## AROUND TOWN

**-Transportation:** NO inexpensive cab's are available in Orange.  
**Please call Theater Staff for pickups from nearby airports: BPT (Beaumont Port Arthur, TX) LCH (Lake Charles, LA)**

Enterprise Rent A Car: 2401 M.L.K. Jr Dr, Orange, TX 77630  
(409) 883-3440

**-HOTELS** The Orange hotels are located about 10-15 minutes from the theater: None within walking distance.

Holiday Inn Express	2655 IH 10	(409) 882-9222
Best Western	2245 Hwy 62	(409)745-9393
Comfort Inn & Suites	2321 Hwy 62 S	(409) 745-0400
Laquinta Inn & Suites	16945 Hwy 62 S	(409)-883-0011

**-RESTAURANTS** Some of the standard fast food establishments are located on 16th Street (Highway 87) between the hotels and the theater. (See map page 7 for locations)

Rarely is anything open after a show except fast food.

Spankys Restaurant Pub . . . . .	(409) 886-2949 / 1703 16th St.
Chili's . . . . .	(409) 886-2400 / Strickland Dr.
Waffle House . . . . .	(409) 882-9006 / 24 hours IH 10
Dennys. . . . .	(409) 883-4720 / Flying J Hwy 62
Boardwalk Grill . . . . .	(409) 330-4450/ (near theater)
Old Orange Cafe . . . . .	(409) 883-2233 / 914 W. Division

### -SHOPPING

Walmart SuperCenter . . . . .	MacArthur Drive
Home Depot. . . . .	Strickland Drive

### -MEDICAL

Golden Triangle Emergency Care . . . . .	409-920-4470
Orange County Urgent Care . . . . .	409-330-4707
Neighbors Emergency Center . . . . .	409-670-9898

### -CLEANERS

Reliable Cleaners . . . . .	1311 Green Ave 883-3555
. . . . .	3011 16th St. 883-0355

**-BANKING** First Financial 16thSt. 409-883-3563 -Stephen Lee

**-ENTERTAINMENT Stark Museum of Art:** *has extensive western American Art collection featuring work by Taos artists, plus collection of prints by John J. Audubon.* [www.starkmuseum.org](http://www.starkmuseum.org)

**W.H. Stark House:** *fully restored 1894 Victorian Home.* [www.wbstarkhouse.org](http://www.wbstarkhouse.org)

**Shangri La Botanical Gardens:** *A world-class facility that connects individuals of all ages with nature.* [www.shangrilagardens.org](http://www.shangrilagardens.org)

**-Passes can be obtained in LT Office for: SMA, WH Stark House & Shangri La Botanical Gardens and Nature Center.**

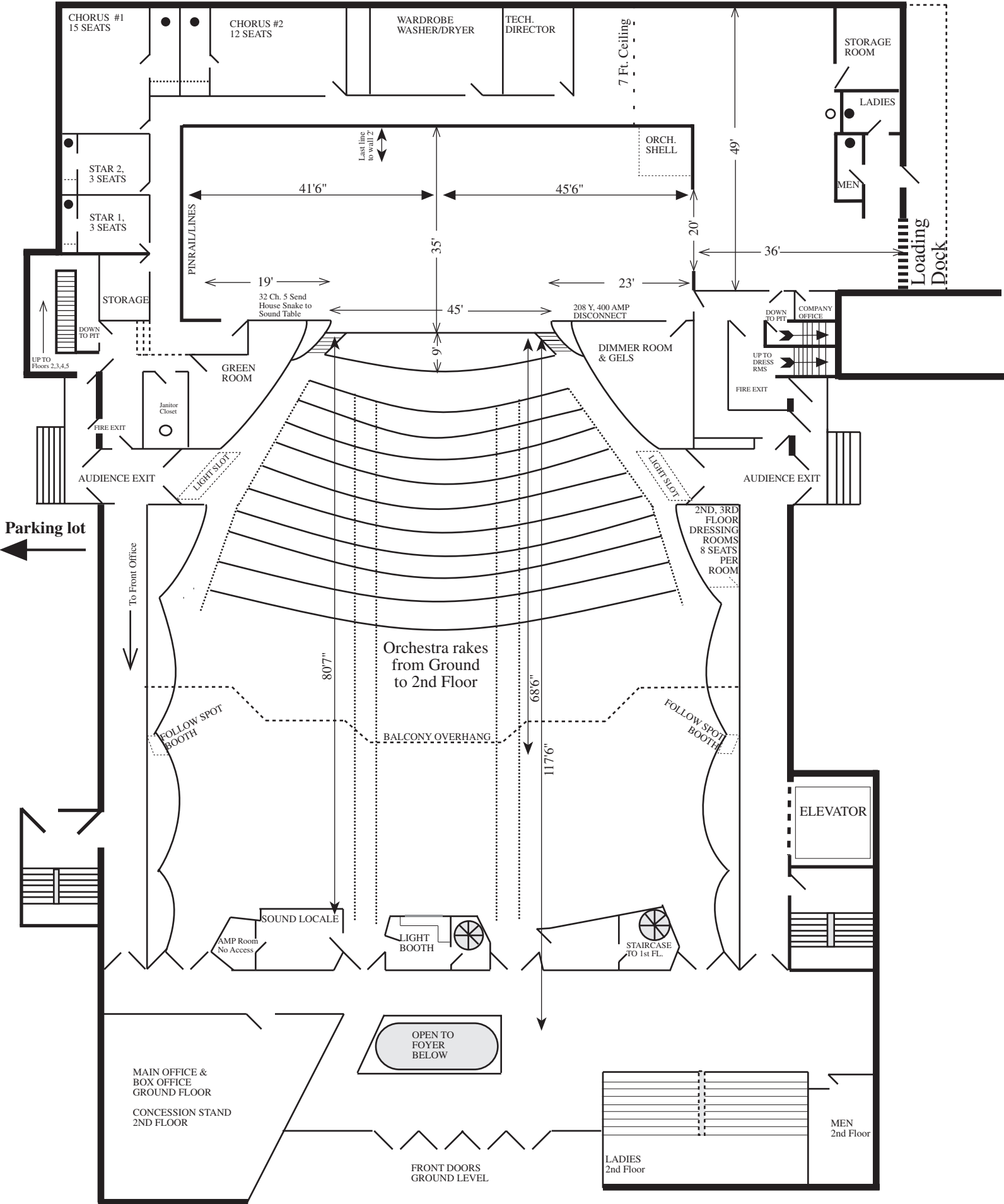
*Delta Downs Horse Racing and Casino-just across the LA stateline in Vinton, LA*

*Lake Charles Casinos: 30 miles East is Lake Charles with multiple riverboat casinos.*

*Sabine Lake, & Gulf of Mexico: Excellent fishing for Snapper, Red Fish, Speckled Trout. Tour guides available.*

# LUTCHER THEATER LINE SCHEDULE

707 W. Main Ave - Orange Tx - 409-886-5535				
		Batten Type		
		"S"=Single Pipe-61'		
LS#		"D"=Double Pipe-60'		
PL	0'-0"		Load Cap	Comments
1	1'	S	1,200	Main Drape 1, Guillotine, out to trim as Valance
2	1'-8"	S	1,200	Main Drape 2, Traveler, (Not Transferable)
3	3'-1"	D	1,000	LX 1 (Raceway)-(Full range of Movement)-(20 circuits)
4	4'-5"	D	1,200	
5	5'-1"	S	1,500	
6	5'-9"	S	1,500	
6a	6'-11"	Split	400	Legs on Motor
7	7'-1"	S	1,500	
8	7'-9"	D	1,200	
9	8'-5"	S	1,500	
10	9'	S	1,500	
11	9'-8"	S	1,300	LX 2 (Raceway)-(Full range of Movement)-(24 circuits)
12	10'-4"	S	1,500	
13	11'	D	1,200	
14	11'-9"	S	1,500	
15	12'-5"	S	1,500	
16	13'-3"	S	1,500	Midstage Traveler (Not Transferable)
17	14'-4"	D	1,200	
18	15'	S	1,500	
19	15'-9"	S	1,500	LX 3 (Dropboxes)-(16 circuits)
20	16'-5"	S	1,500	
21	17'	S	1,500	
22	17'-8"	D	1,200	
23	18'-4"	S	1,500	
23a	19'	Split	400	Legs on Motor
24	19'-9"	S	1,500	
25	20'-4"	S	1,500	
26	21'-1"	D	1,200	
27	21'-9"	S	1,500	LX 4 (Dropboxes)-(16 circuits)
28	22'-6"	S	1,500	
29	23'	S	1,500	
30	23'-9"	D	1,200	
31	24'-4"	S	1,500	
31a	25'-2"	Split	400	Legs on Motor
32	25'-8"	S	1,500	
33	26'-4"	S	1,500	LX 5 (Dropboxes)-(16 circuits)
34	27'	S	1,500	
35	27'-8"	S	1,500	
36	28'-4"	S	1,500	
37	29'	S	1,200	
38	29'-8"	D	1,100	
39	31'-7"	S	1,200	
40	33'-1"	D	1,100	
41	33'-9"	S	1,500	Upstage Full Black
42	34'-1"	S	1,500	Da-Lite Screen
	35'-10"			BACK WALL
(F.o.H. Cove 34 circuits)-(Box Booms, 1 Pair, House Left & Right, 8 circuits each)				



LUTCHER THEATER FOR THE PERFORMING ARTS